

The PEARL Project



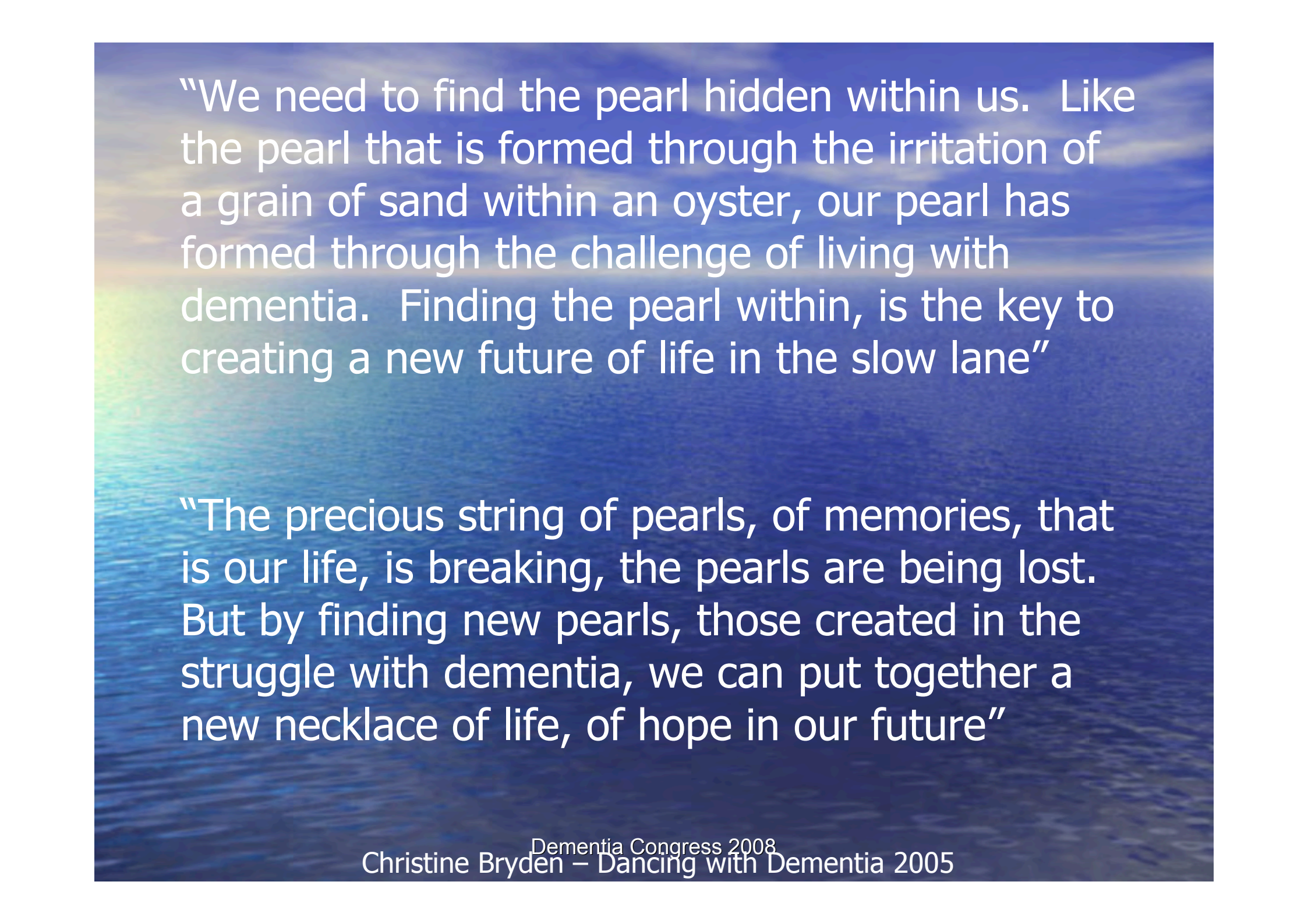
PEARL

SPECIALISED DEMENTIA SERVICE

Caroline Baker
Dementia Care Services Director
Four Seasons Health Care

Why PEARL?

- Positively
- Enriching
- And Enhancing
- Residents
- Lives



“We need to find the pearl hidden within us. Like the pearl that is formed through the irritation of a grain of sand within an oyster, our pearl has formed through the challenge of living with dementia. Finding the pearl within, is the key to creating a new future of life in the slow lane”

“The precious string of pearls, of memories, that is our life, is breaking, the pearls are being lost. But by finding new pearls, those created in the struggle with dementia, we can put together a new necklace of life, of hope in our future”

Making the Difference

- Good Fundamental Care
- Excellent Dementia Care

Initiating the PEARL Project

- Sign up from Chief Executive, Managing Director's, Estates, Training and Marketing Directors
- Formulation of 100 criteria based on evidence based/research based practice
- 12 homes within Four Seasons Health Care
- Employment of 3 further Dementia Care Trainers
- Promotion of existing Dementia Care Trainer

From small beginnings.....

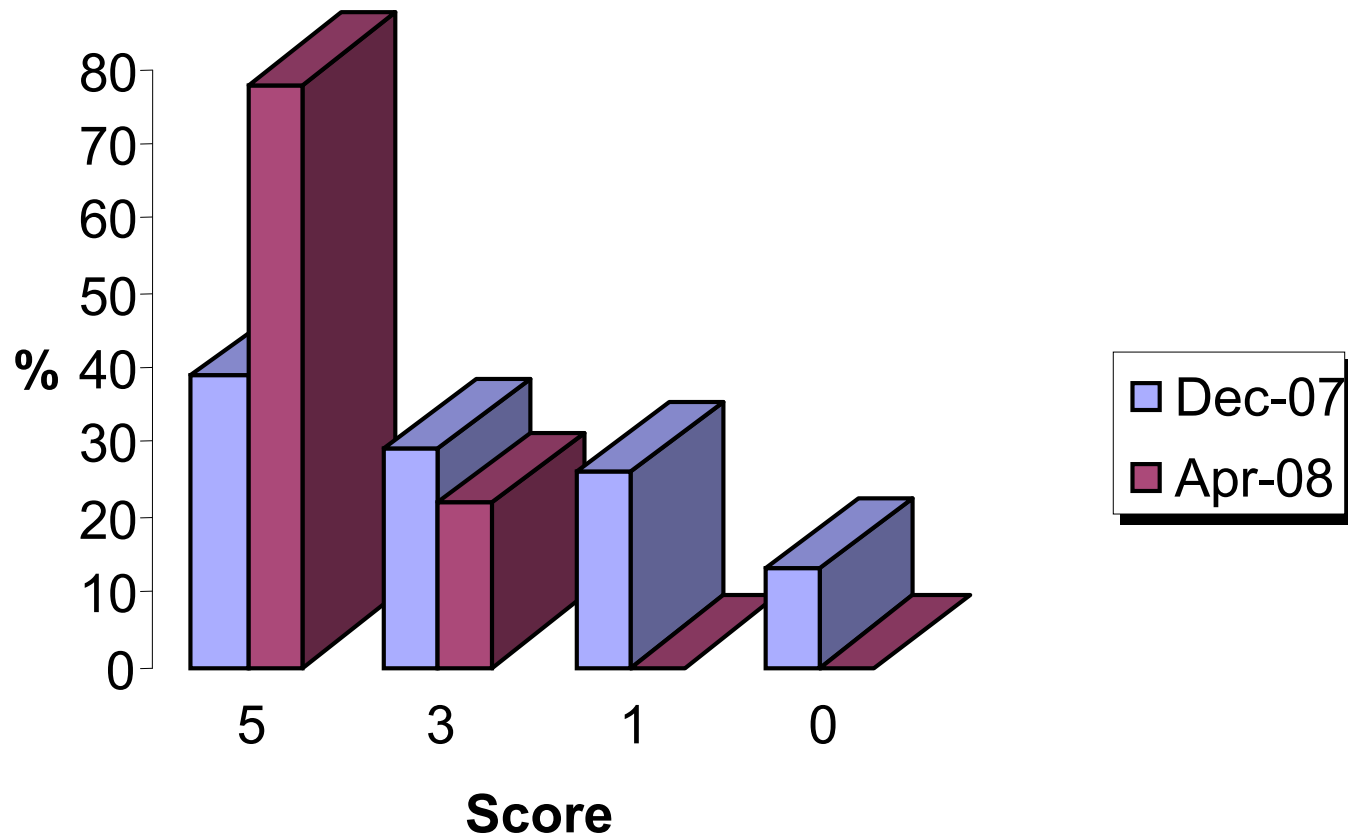
- Baseline carried out in January 08 (Self Assessment)
- Baseline visits carried out January 08
- PCC Training, DCM Training, Resident Experience Training ongoing
- 6 weekly visits by Dementia Services Director
- Remedial Action Plans
- 3 monthly Home Managers meetings

PEARL Criteria

- Knowing our Residents and easing transition
- Training and Development
- Person Centred Care
- Fundamental Care
- DCM Implementation
- Pro-active Documentation
- Medication
- Life Story Work
- Activity and Engagement
- Nutrition
- Privacy & Dignity
- End of Life Care
- Safeguarding Adults
- Mental Capacity Act
- Staffing
- Environment

Granby Rose – 3* Home

Award Criteria



Biggest Impacts

- Resident Experience Training
- DCM Training/PCC Training
- Care staff participating in pre-admission assessments
- Environmental – Object Rich Environments
- Medication Reviews/Reductions
- Life stories translating in Person Centred practice
- Team working

Validation Process

- Most homes chose end of year to be validated!
- Unannounced 2 day validation visit by at least 2 members of Dementia Care Development Team
- DCM, Interviews with residents, relatives, staff plus observable evidence
- 4 homes accredited and now helping others to achieve
- Award!

PEARL Project - Phase 2

- Working with Dawn Brooker to amalgamate VIPS into PEARL criteria and to put all policies/procedures within VIPS criteria
- Review current documentation in light of best practice
- Another 12 homes + monitor existing 12 homes